



**MATERIAL
NAME**

UNCUT CHENILLE

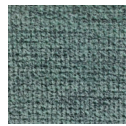
**MATERIAL
SPECIFICATIONS**

- o 100% polyester
- o Very soft hand feel from the cut yarns
- o Fabric is a heather composition with various tones of one shade
- o The various fabric tones give the fabric a checkered appearance

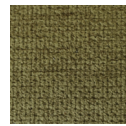
**MATERIAL
SWATCHES**



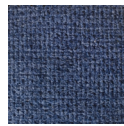
DIJON



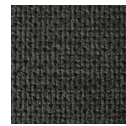
MIST



OLIVE



MARINE



CINDER



CHESNUT



DOVE



OATMEAL